

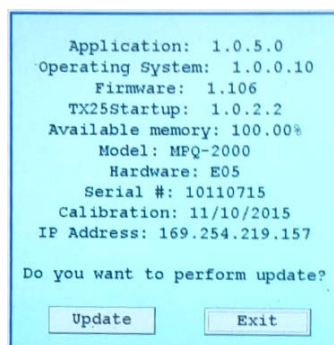
## MPQ2000 Operation with a wireless bridge

### Initial Configuration

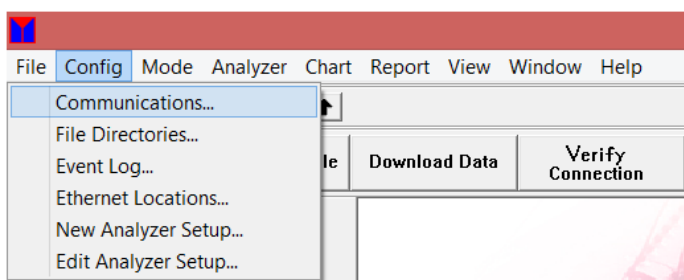
1. Connect the Ethernet Bridge to MPQ2000 unit.
2. Wait about 2 minutes for the bridge to assign the MPQ2000 an IP address.
3. Open the HELP Screen and view the IP address.



If the IP address reads 0.0.0.0 then wait another couple minutes, close the HELP screen and re-open the help screen. Verify an IP address has been assigned.

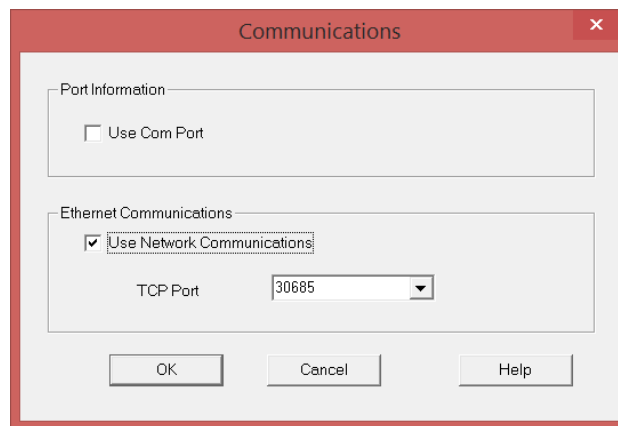


4. Connect the PC to the same network the bridge is on.
5. Disconnect the PC from any other networks.
6. In the PC software, select **CONFIG** then **COMMUNICATIONS**.

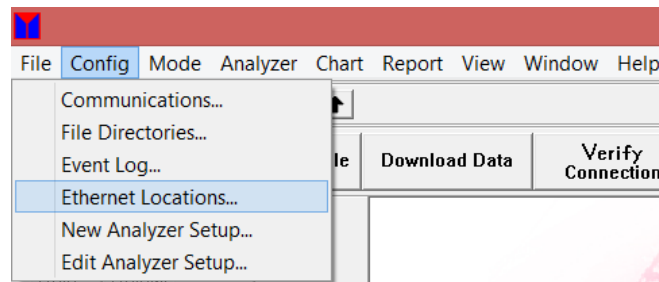


7. In the communications window select **USE NETWORK COMMUNICATIONS**. Click OK to close the window.

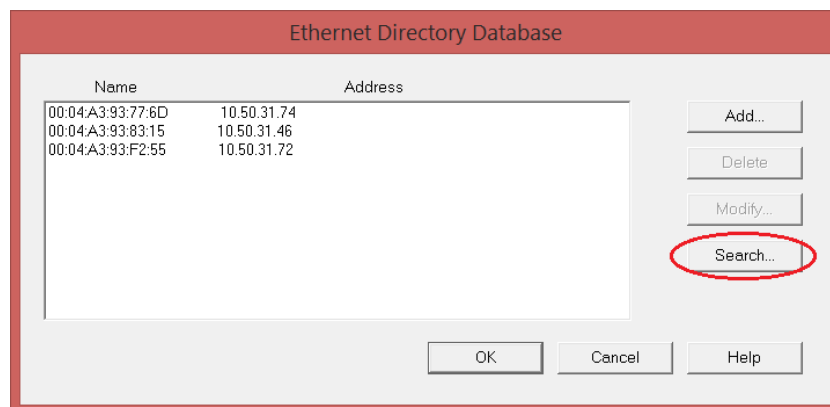
## MPQ2000 Operation with a wireless bridge



8. In the PC software select **CONFIG** then **ETHERNET LOCATIONS**



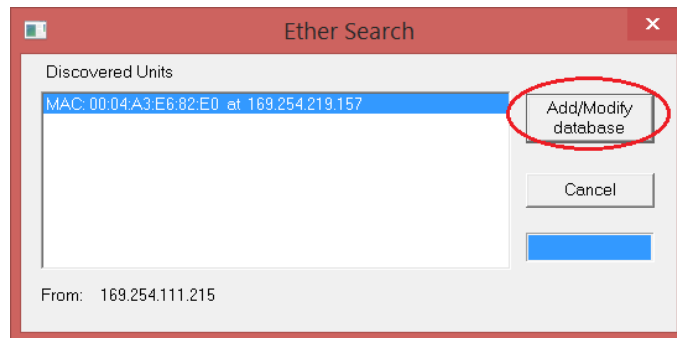
9. In the Ethernet Directory Database window select **SEARCH**. The software will now search the network and display all MPQ units.



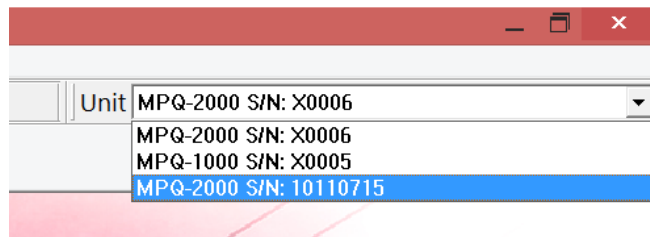
10. A window will open displaying the units' MAC addresses and IP addresses. Select the desired unit and then click on the **ADD/MODIFY DATABASE** button.

# APPLICATION NOTE

## MPQ2000 Operation with a wireless bridge



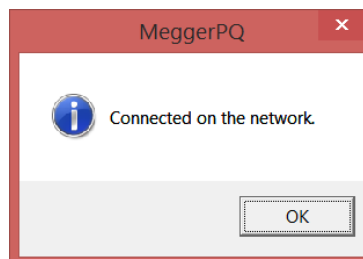
11. Click OK to close the Ethernet Directory Database window.
12. In the upper right quadrant of the PC software is a drop down field labeled **UNIT**. Select the Serial Number of the unit that you wish to connect to.



13. In the PC software select **VERIFY CONNECTION**.



The software will now locate the unit and indicate that it has connected.



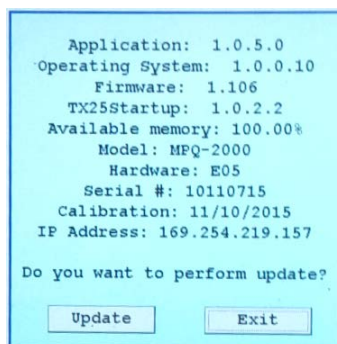
## MPQ2000 Operation with a wireless bridge

### Connecting to a unit already in the communications database

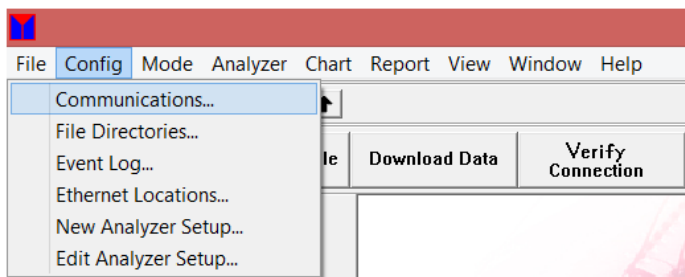
1. Connect the Ethernet Bridge to MPQ2000 unit.
2. Wait about 2 minutes for the bridge to assign the MPQ2000 an IP address.
3. Open the HELP Screen and view the IP address.



If the IP address reads 0.0.0.0 then wait another couple minutes, close the HELP screen and re-open the help screen. Verify an IP address has been assigned.

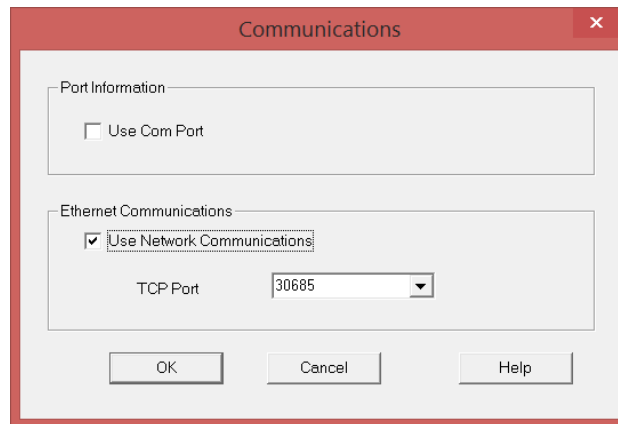


4. Connect the PC to the same network that the bridge is on.
5. Disconnect the PC from any other networks.
6. In the PC software select **CONFIG** then **COMMUNICATIONS**.

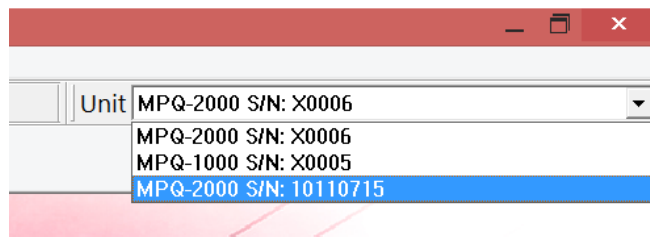


7. In the communications window select **USE NETWORK COMMUNICATIONS**. Click OK to close the window.

## MPQ2000 Operation with a wireless bridge



8. In the upper right quadrant of the PC software is a drop down field labeled **UNIT**. Select the Serial Number of the unit to which you wish to connect.



9. In the PC software select **VERIFY CONNECTION**



The software will now locate the unit and indicate it has connected.

